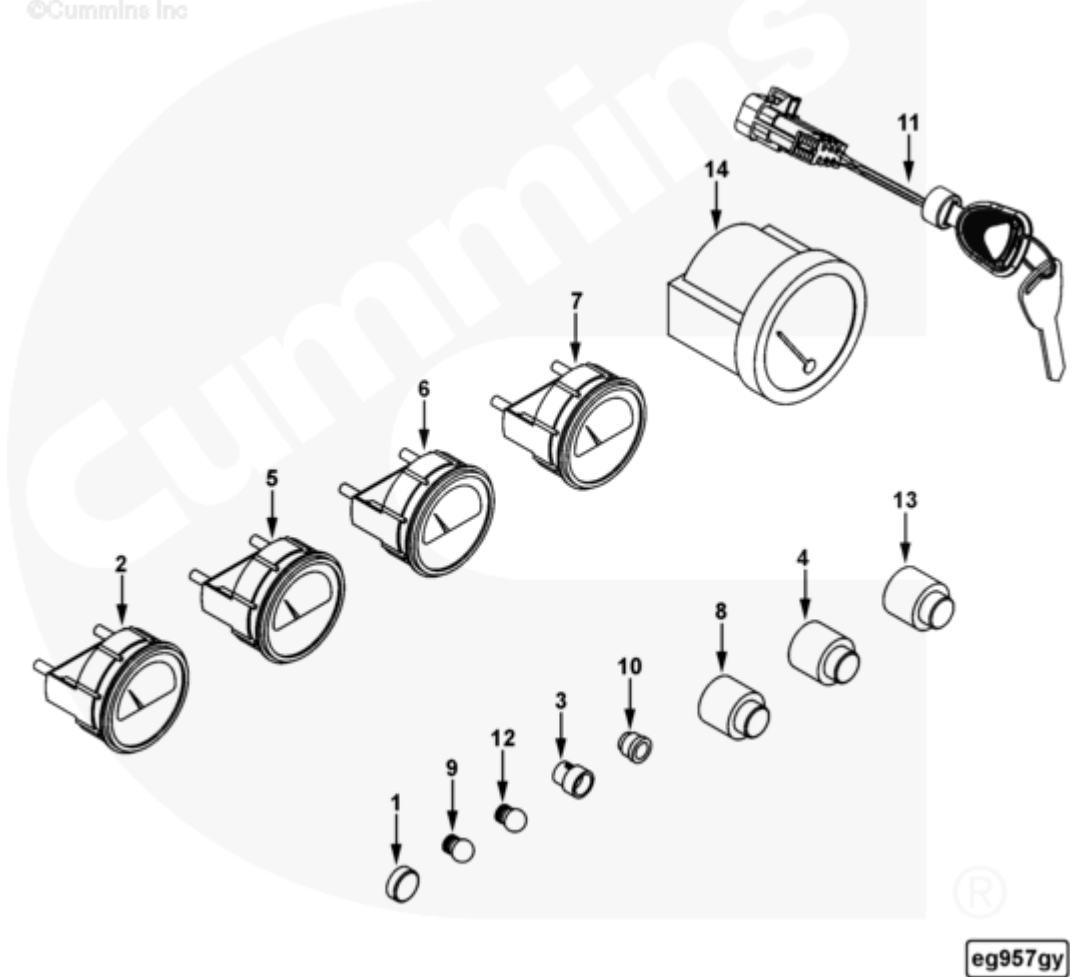




Parts Catalog - Option Detail

Electronic Parts Catalog - Option Detail				
Option	Group	Graphic	Film Card	Date
EG9193-03	15.08	eg957gy	Z	14-JAN-02
Engines	6C8.3, C GAS PLUS CM556, G8.3, G8.3 CM558, GTA8.3 CM558, ISC CM2150, ISC CM554, ISC CM850, ISC8.3 CM2250, ISC8.3 G CM2180 C101, ISL CM2150, ISL CM554, ISL CM850, ISL G CM2180, ISL8.9 CM2150 L110, ISL8.9 CM2880 L112, ISL9 CM2150 SN, ISL9 CM2250, ISL9 CM2350 L101, ISL9 CM2350 L111, ISLE4 CM850, L GAS PLUS CM556, L8.9, L8.9 L121, L8.9G CMOH2.0 L125B, L9 CM2350 L116B, L9 CM2350 L119B, L9 CM2350 L120C, L9 CM2350 L123B, L9.3 L105, L9.5 L117, L9N CM2380 L124B, QSC8.3 CM2250, QSC8.3 CM2880 C102, QSC8.3 CM554, QSC8.3 CM850(CM2850), QSL9 CM2250, QSL9 CM2250 L115, QSL9 CM2350 L102, QSL9 CM2350 L107, QSL9 CM2350 L118, QSL9 CM2350 L122, QSL9 CM554, QSL9 CM850(CM2850), QSL9 G CM558, QSL9 M CM2250 L106, QSL9.3 CM2880 L113			



SMALL | MEDIUM | LARGE

Cart	Ref No	Part Number	Part Description	Required	Remarks
View My Cart					
		EG9193-03	Engine Instrument Panel		MR - ENGINE INSTRUMENT PANEL...(More)

					Voltage: 24
					Tachometer Provided: Yes, 0-
					4000
					Tachometer Pre-Set at
					Factory: No
					Hourmeter Provided: Yes
					Overspeed Switch Provided:
					No
					Oil Pressure Gauge Provided:
					Yes
					0-10 BAR/ 0-150 PSI
					Oil Temperature Gauge
					Provided: No
					Coolant Temperature Gauge
					Provided: Yes 40-120 (deg
					C); 100-250 (deg F)
					Ammeter/Voltage Gauge
					Provided: Yes, 18-32 V
					Start/Stop Switch Provided:
					Key Switch
					Fuel Shut-Off Provided: No
					Wiring Harness Provided: No
					Ground Return: Insulated
					Alarm Light/Sound Module:
					Yes
					Unique Characteristics: Main
					Station
					Engine Family: B & C Series
					Restricted Engine Cylinders:
					4; 6

					Restricted Application: Gen
					Drive; Industrial: Marine
					Panel Includes VDO Vanguard
					Series Gauges
<input type="checkbox"/>		3957752	Instrument Panel	1	
<input type="checkbox"/>	1	3913618	Visual Alarm	4	
<input type="checkbox"/>	2	3913621	Blank Gauge	1	
<input type="checkbox"/>	3	3913623	Control Module Alarm	1	
<input type="checkbox"/>	4	3913624	Alarm Reset Switch	1	
<input type="checkbox"/>	5	3957755	Pressure Gauge	1	
<input type="checkbox"/>	6	3957757	Temperature Gauge	1	
<input type="checkbox"/>	7	3957759	Volt Gauge	1	
<input type="checkbox"/>	8	3957893	Alarm Cancel Boot	1	
<input type="checkbox"/>	9	3957895	White Lamp	1	
<input type="checkbox"/>	10	3957896	Blue Lamp Cover	1	
<input type="checkbox"/>	11	3971088	Key Switch	1	
<input type="checkbox"/>	12	3971089	Light Bulb		
<input type="checkbox"/>	13	3971091	Push Button Switch	1	
<input type="checkbox"/>	14	4003300	Gauge	1	0 - 4000 RPM
<input type="checkbox"/>		4003294	Pressure Gauge		Oil, 0-150 PSI, 0-10 Bar
<input type="checkbox"/>		4003300	Gauge		0 - 4000 RPM
<input type="checkbox"/>		4003296	Temperature Gauge		40-120C, 100-250F
<input type="checkbox"/>		4003298	Volt Gauge		19-32 Volts